



REPORT TO THE JOINT COMMITTEE

10 NOVEMBER 2021

Report by: Arwyn Thomas - GwE Managing Director

Subject: Supporting all schools for Curriculum for Wales - Developing Curriculum for Wales regional and local networks

1.0 Purpose of the Report

1.1 To present information to Joint Committee members on our approach to developing Curriculum for Wales regional and local networks as part of supporting all schools and settings to implement Curriculum for Wales.

2.0 Background

2.1 Wales is committed to an ambitious reform agenda to realising a transformational curriculum. The Curriculum for Wales is a purpose-led curriculum placing the 4 Purposes at the heart of all teaching and learning and as the shared vision for every child and young person in Wales.

2.2 The publication of the [Curriculum for Wales guidance](#) in January 2020 signalled the next phase of curriculum reform and the rollout of Curriculum for Wales in all primary schools, maintained nursery schools and non-maintained nursery settings and from September 2022. Those secondary schools ready to roll out the curriculum in year 7 will be encouraged to do so, however formal implementation of the new curriculum will not be mandatory until 2023, with roll out in that year to years 7 and 8 together.

2.3 GwE have worked with fellow regional consortia, Estyn and Welsh Government to set out the expectations on schools and settings in respect of reform as we move towards implementation of Curriculum for Wales in [Curriculum for Wales: The journey to 2022](#). This

document also acknowledges the challenge that Covid-19 continues to present to all schools within the renew and reform strategy.

2.4 Across GwE, schools have previously been supported to engage with the Curriculum for Wales through Curriculum for Wales Cluster Facilitators. Professional learning and funding have been available to networks and clusters of schools to develop collaboration with practitioners across the 3-16 continuum. The Curriculum for Wales networks are the next stage in this development, looking to develop collaboration across the whole curriculum.

2.5 In June 2021, schools were invited to express an interest to be part of the regional Curriculum for Wales networks to contribute to GwE's ongoing support programme for schools in the following areas:

- Whole school Curriculum Design
- Progression and Assessment
- Unpacking the potential of one of the AOLES
 - Language, Literacy and Communication (both Welsh and English)
 - Mathematics and Numeracy
 - Science & Technology
 - Humanities
 - Health and Wellbeing
 - Expressive Arts

During the Summer term 2021, 300 teachers initially expressed an interest in being part of the networks. During September and October 2021, many more schools requested to be part of the local networks and there are now over 600 teachers from school settings across the region committed to being part of this work.

2.6 The Curriculum for Wales Networks will work in partnership with Professor Graham Donaldson, GwE and the six North Wales LAs in developing effective AOLES practice which will help schools on the Reform Journey. The work of the networks is fully aligned to the expectations detailed within the [*Curriculum for Wales: The journey to 2022*](#) document and represent the principles within of:

- Co-construction
- Pedagogy
- Engagement with professional learning, expertise and networks
- Schools as Learning Organisation
- Wider school context

3.0 Considerations

3.1 Attached (Appendix 1) is an overview of the networks at both regional and Local Authority level. Within each of the eight groups in all Local Authorities, two representatives from schools have been identified to represent the local group at a regional level. The role of these representatives is to attend the half termly regional meetings and to then lead and chair the local meetings to discuss and work collaboratively on modelling agreed aspects of curriculum design.

- 3.2 A team of Supporting Improvement Advisors has been allocated to work with each of the eight regional groups. The GwE colleagues are able to contribute to discussions and help facilitate and support the Chair within the local meetings as required. A key role for the Supporting Improvement Advisors will be to ensure that all schools have access to the work and learning that is developed and shared through the networks. This work can be accessed through the GwE Support Centre.
- 3.3 Clear communication channels will be paramount and processes for ensuring effective 2-way communication through the use of digital technology are being established, for example, the use of TEAMS to store and share documentation with all regional members having access to these live documents.
- 3.4 Regional network meetings will take place half termly and will focus on a specific theme. An overview of the themes has been agreed that comes directly from the Journey to Rollout document and can be found in Appendix 2. In this way, the requirements that all schools need to implement before rollout will be considered during the academic year 2021-2022. GwE will also work collaboratively to facilitate professional learning and input from ‘experts’ where needed. Where possible, sessions will be recorded for sharing within local networks. The overview of themes will be reviewed regularly, taking into consideration feedback from local network meetings, feedback from national conversations and work with fellow regional consortia.

4.0 Recommendations

- 4.1 The Joint Committee is asked to accept and approve the approach to developing regional and local networks as part of supporting all schools and settings to implement Curriculum for Wales.

5.0 Financial Implications

- 5.1 GwE will operate within current financial resources through Welsh Government grant funding. All schools will be funded £2000 to engage with networks at both regional and national level. School representatives in the GwE Curriculum for Wales regional and local networks will have access to additional funding of up to 15 working days to include attending local meetings, engage in professional learning and school-based work.

6.0 Equalities Impact

- 6.1 There are no new equalities implications arising from this report.

7.0 Personnel Implications

- 7.1 There are no new personnel implications arising from this report.

8.0 Consultation Undertaken

- 8.1 Consultation with GwE Management Board, Joint Committee and GwE Full Team.

9.0 Appendices

9.1 Appendix 1 – An overview of the Curriculum for Wales Regional and Local Networks

9.2 Appendix 2 – An overview of the themes to be considered by the Curriculum for Wales Networks for 2021-2022

9.3 Appendix 3 - Curriculum for Wales Networks Terms of Reference

OPINION OF THE STATUTORY OFFICERS

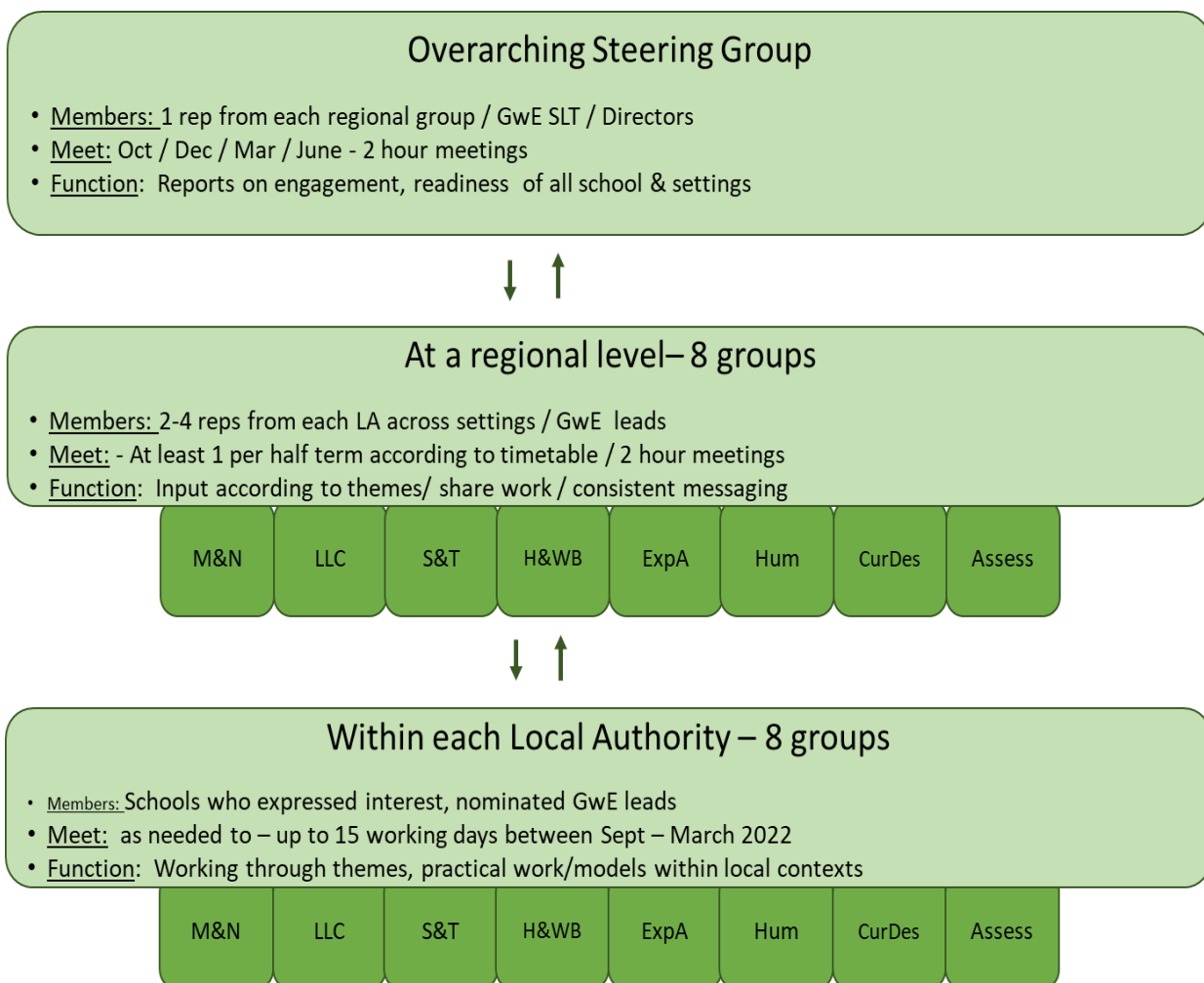
Monitoring Officer:

Nothing to add from a propriety perspective.

Statutory Finance Officer:

I confirm that there is an allocation within the Regional Consortia School Improvement Grant to support the development of understanding, and to support curriculum design and planning in preparation for implementation of Curriculum for Wales. It is expected that GwE will operate within this financial resource as stated in 5.1 of the report.

APPENDIX 1



APPENDIX 2

	Autumn Term 2021	Spring Term 2022	Summer Term 2022
AOLE groups	<p>Unpacking Statements of What Matters - key concepts</p> <p>Planning for Cross-curricular skills</p>	<p>Considering the role of professional enquiry—trailing within schools</p> <p>Developing range of models and approaches in local contexts</p>	<p>Models and approaches within and across AOLES—working with local community</p> <p>Evaluation of trialed models—sharing professional learning</p>
Curriculum design	<p>Understanding of a high-level curriculum model</p> <p>Considerations for shared understanding of progression</p>	<p>Planning for the mandatory elements—cross-cutting themes</p> <p>Approaches to support whole school health and wellbeing</p>	<p>Examples of summary curriculum to publish</p> <p>Examples of reporting to parents</p>
Progression & Assessment	<p>Considerations of whole school approaches to assessment</p>	<p>Models to show effective transition across 3-16 continuum</p>	<p>Preparing for first teaching</p>